

3:41



Excavations at Snaketown, Harold Gladwin, 1937, plate CXLIV

4:04



Excavations at Snaketown, Harold Gladwin, 1937, plate CLVII

4:11



The Hohokam Desert Farmers & Craftsmen, Emil Haury, 1976, page 180

5:09



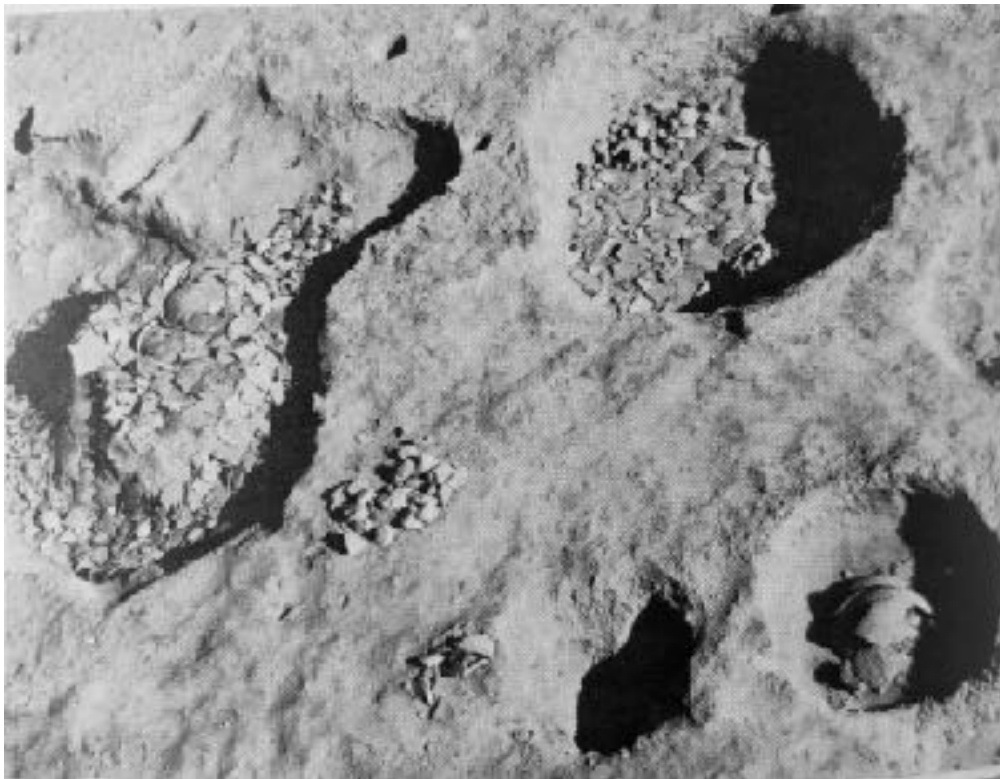
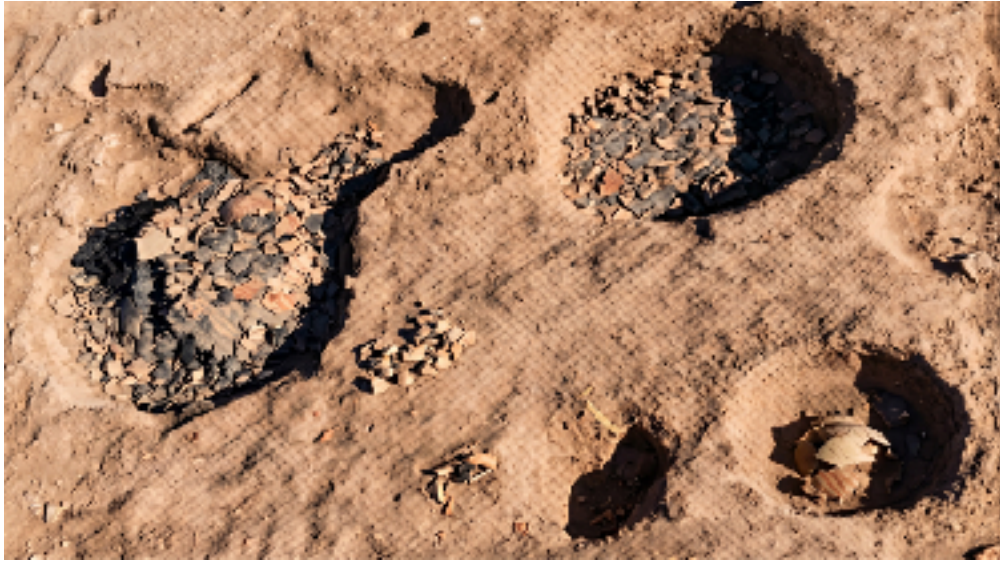
The Hohokam Desert Farmers & Craftsmen, Emil Haury, 1976, page 196

5:14



The Hohokam Desert Farmers & Craftsmen, Emil Haury, 1976, page 196

5:20



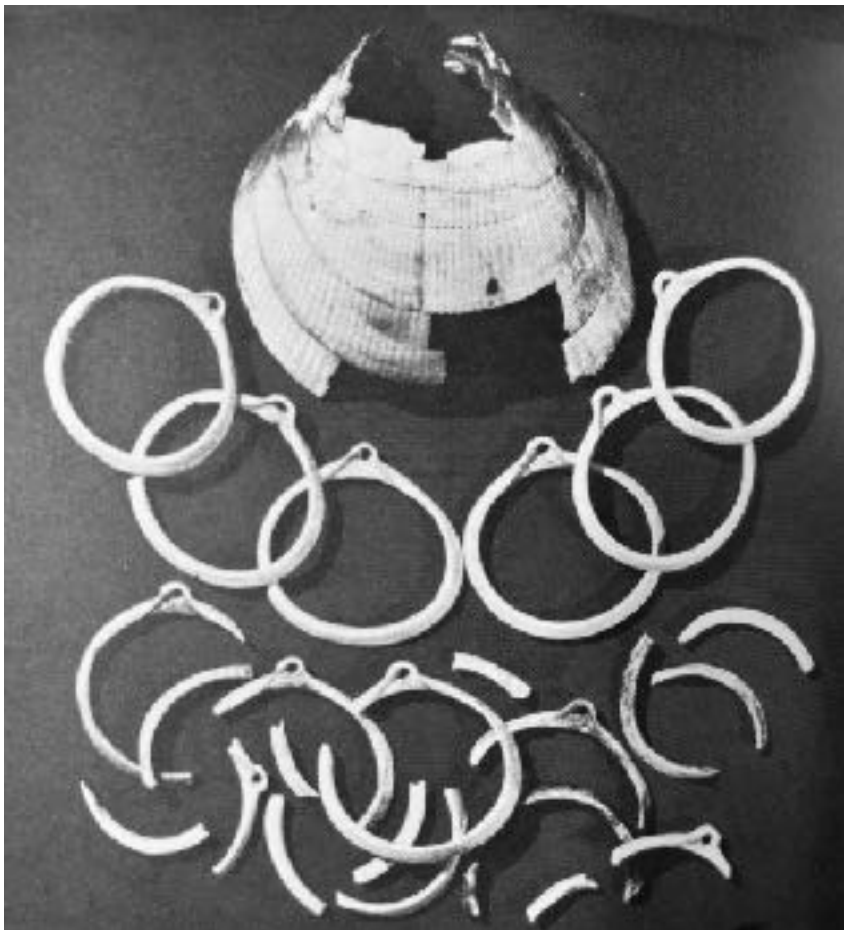
The Hohokam Desert Farmers & Craftsmen, Emil Haury, 1976, page 196

5:29



Excavations at Snaketown, Harold Gladwin, 1937, plate CLVII

5:41



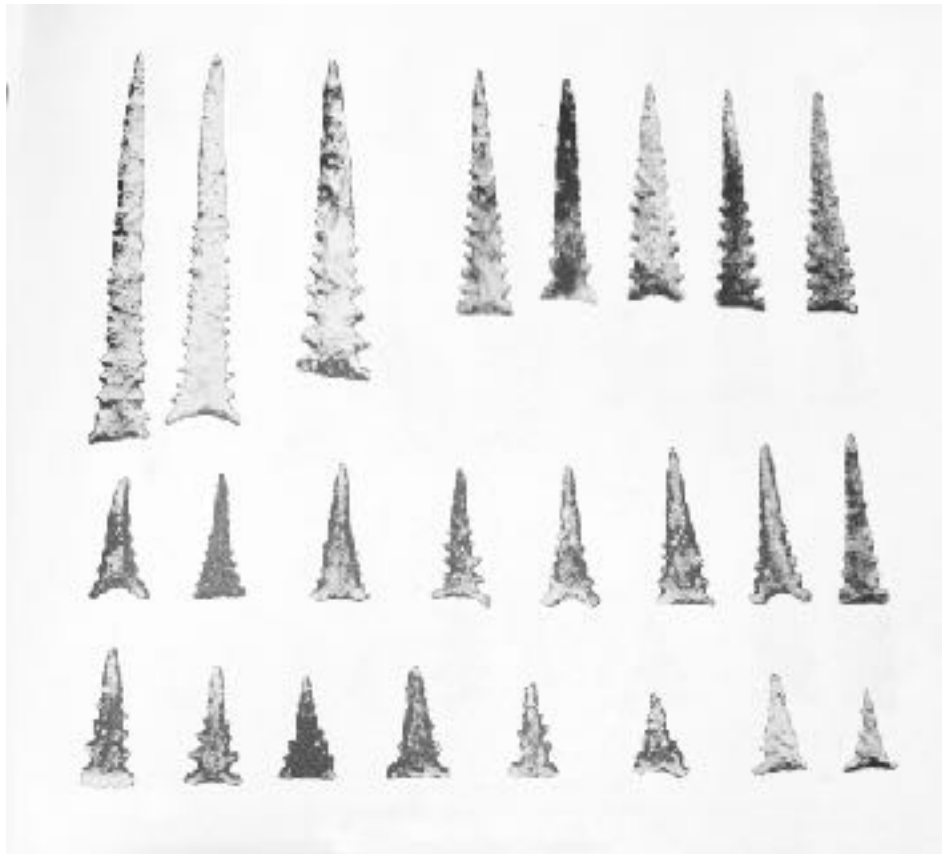
The Hohokam Desert Farmers & Craftsmen, Emil Haury, 1976, page 182

6:05



Excavations at Snaketown, Harold Gladwin, 1937, plate LXXXVI

6:15



Excavations at Snaketown, Harold Gladwin, 1937, plate LXXXV

6:28



Excavations at Snaketown, Harold Gladwin, 1937, plate XC

15:41



Casa Grande Ruins National Monument

18:25



Fig. 1. G. Example of refuge mounds that, to the trained eye, announce the presence of an old village.

The Hohokam Desert Farmers & Craftsmen, Emil Haury, 1976, page 10

18:31



The Hohokam Desert Farmers & Craftsmen, Emil Haury, 1976, page 10